

H400

The ultimate compact applicator for integration into a multitude of form, fill and seal / flow wrapping machines

Thanks to its modular construction and unparalleled compactness the **HERMA 400** is the ideal solution when it comes to integration into most popular form, fill & seal machines / flow wrappers.

HERMA 400 is always a perfect fit.

The integrated servo control eliminates the need for an external control box and a host of cumbersome interconnecting cables. The applicator and its sub-assemblies are mounted as if they are an integral part of the machine.

The labelling speed is exactly synchronized to the speed of the web to give precise label placement at all speeds.

Flexibility, ease of operation, simple installation and ultracompactness make **HERMA 400 the first-choice applicator for integration into VFFS/HFFS form, fill and seal machines.**



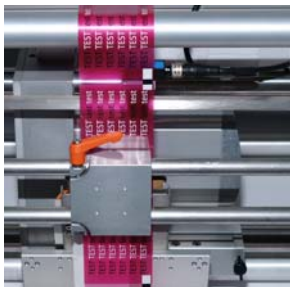
Mounting frames, which fit onto the host machine without problem (*configuration example*)



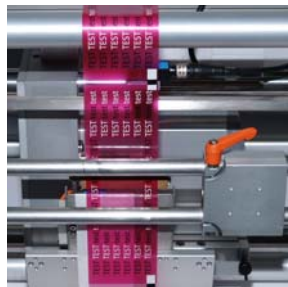
Vertical reel holder available for comfortable insertion and even less space requirement

H400

HERMA 400 for HFFS and VFFS machines – compact, modular, servo controlled. The labeller range with a modular system



Well thought out details:
simply move counter
plate aside when
threading the web.



The advantages of HERMA 400 models at a glance:

- > Control integrated into the applicator - no separate control box required
- > Clearly laid out operating panel
- > Wide range power input 100V AC ... 240V AC $\pm 10\%$, 50 Hz ... 60 Hz
- > Automatic synchronization of labelling and product speeds
- > Special unwind unit giving consistent web tension
- > Comprehensive range of modules: pedestals, label sensors, printing and embossing units – always a perfect fit
- > Available as left-hand and right-hand versions, for upright, horizontal or suspended operation, width in increments of 80 mm/3" up to 320 mm/12"
- > PLC connection - no problem at all
- > Transparent labels - no problem at all (patented label sensor)
- > Easy to expand
- > Integrate most popular coders/printers

We are constantly endeavouring to improve our products.
All technical data is therefore subject to change without prior notice.



Everything under control

For individually configuring your applicator the clearly laid out display panel allows for convenient and simple adjustment to the operating parameters.

HERMA GmbH
Labelling Systems Division
73779 Deizisau / Germany
www.herma.com
www.herma-labeler.com